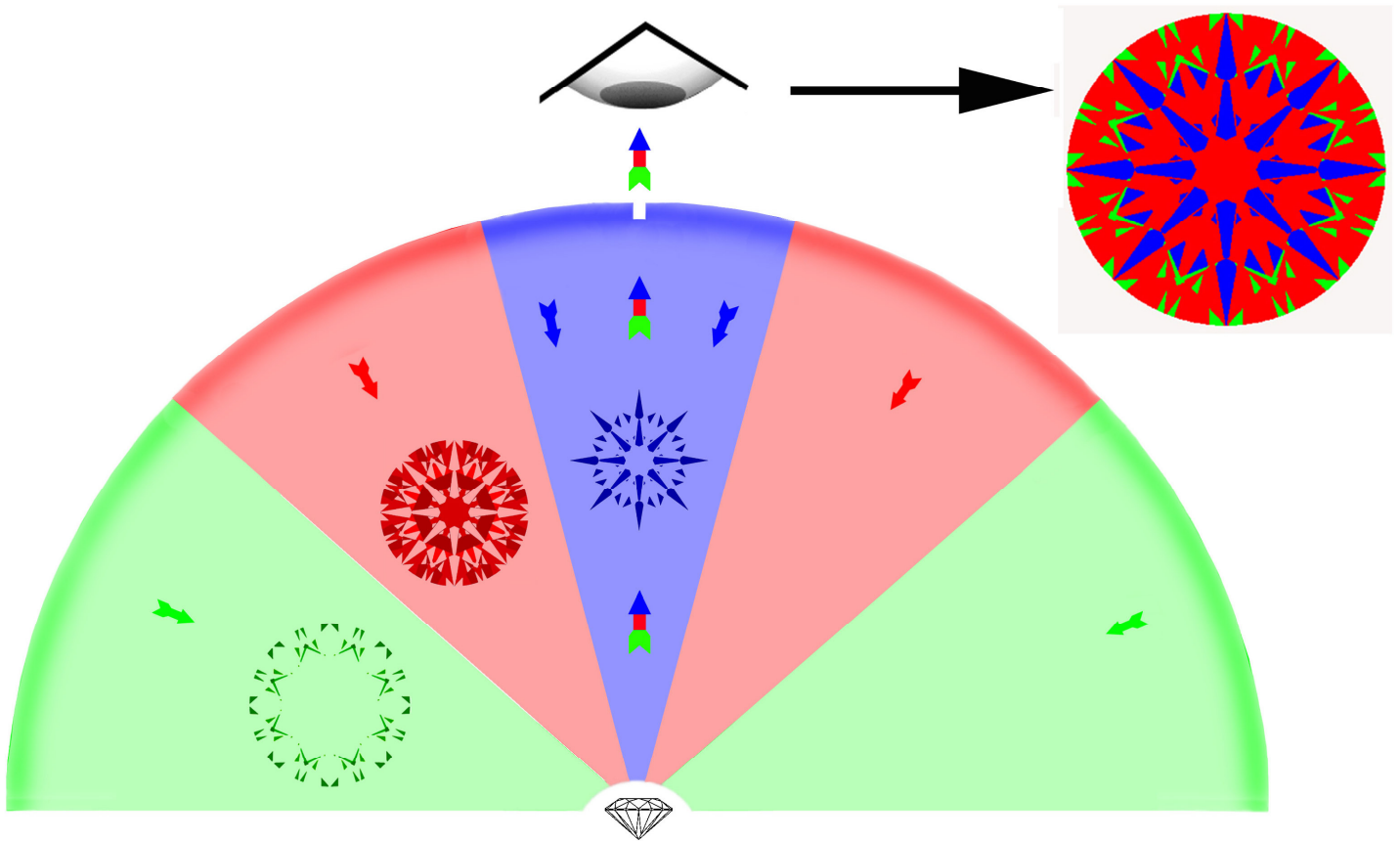


ADVANCED INSTRUMENTS DIVISION
AMERICAN GEM SOCIETY

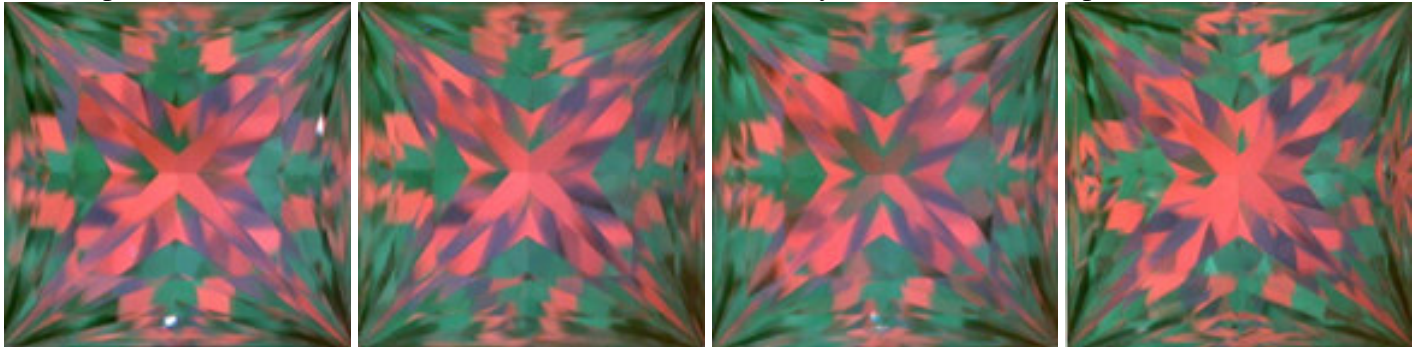
Handheld ASET
INSTRUCTIONS

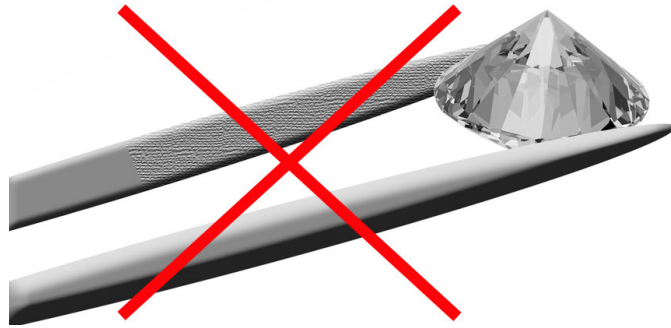




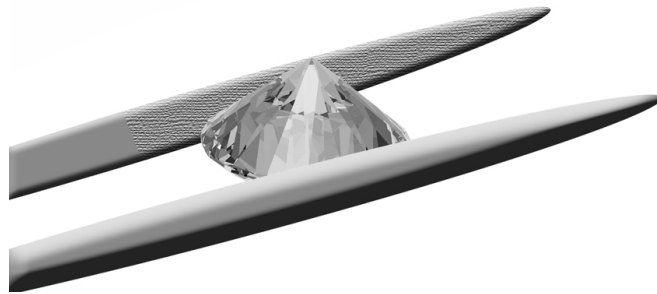
- Blue** Light that is blocked by the observer. In well cut diamonds, this represents **'Positive Contrast'**
- Red** The most intense light that comes directly from the source and contributes to **'Brilliance'**
- Green** Less intense than red, this area contributed to brilliance in **'Fancy Cuts'**
- Black** Leakage

It is important to have a nice distribution of the colors. Below you can see an example of well cut diamonds.

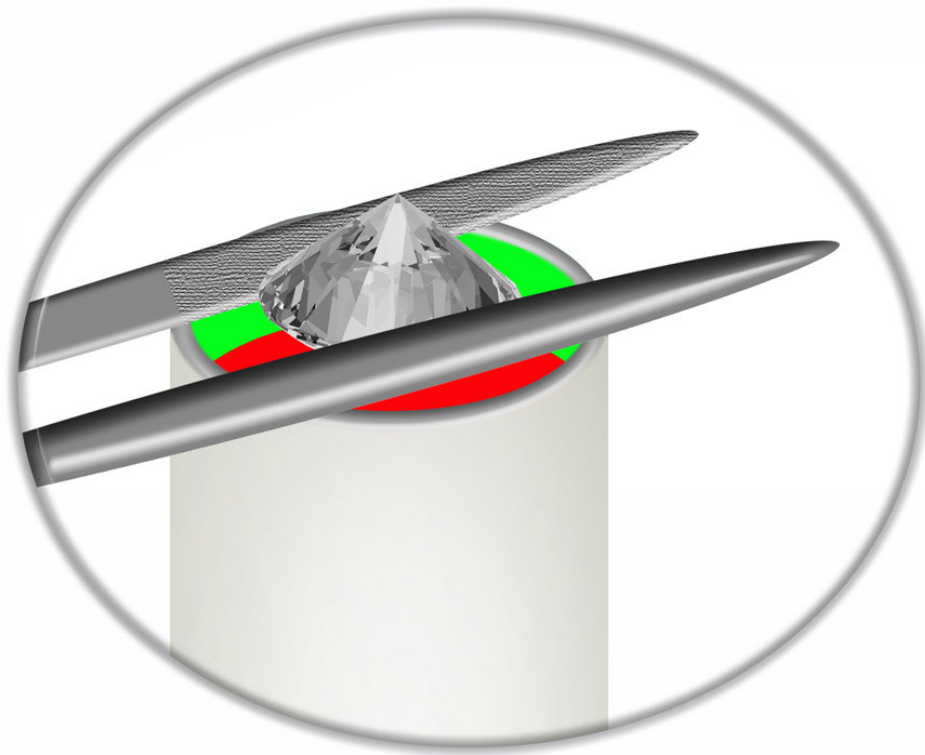




Grip the diamond about $\frac{3}{4}$ of an inch from the tip



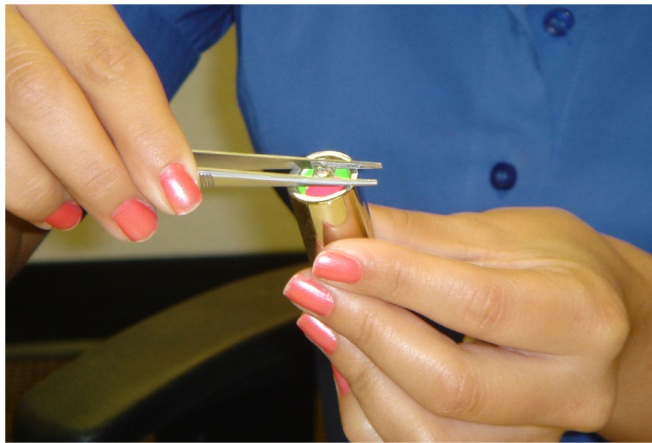
This allows you to place the diamond and tweezers against the ASET



The diamond girdle should be **parallel** to the bottom of the ASET



Make sure the diamond is centered as seen below



Raise the diamond and ASET, keeping the two together

