

ADVANCED INSTRUMENTS DIVISION

AMERICAN GEM SOCIETY

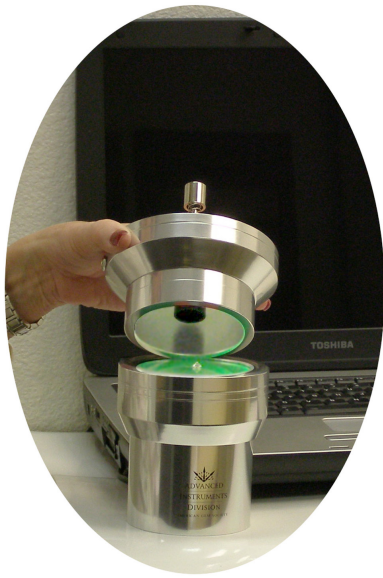
ASET® Camera Lighting Environment



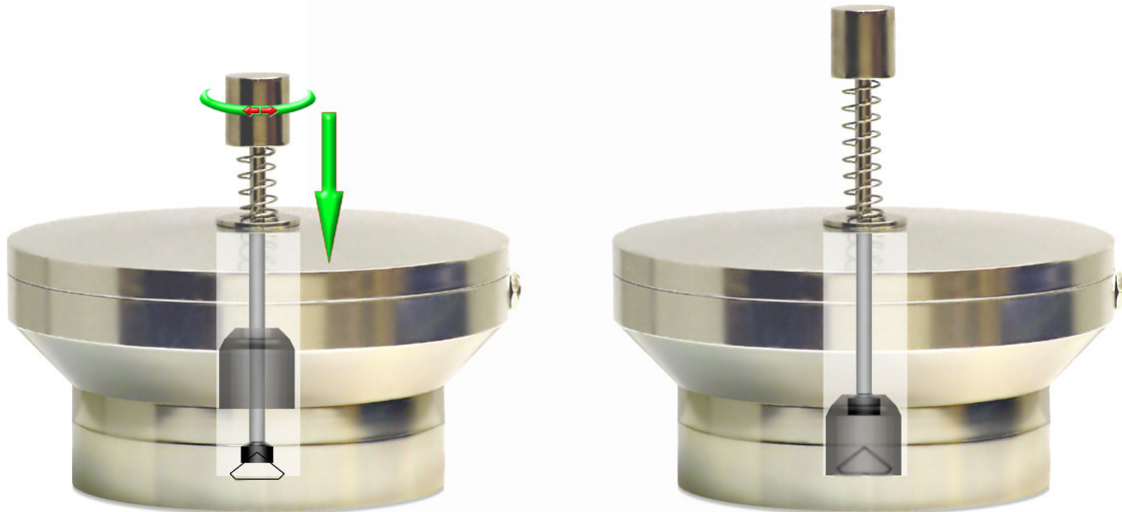
- Bright diffuse light
- LED - very low power consumption, long life, consistent illumination
- Ergonomic design – ease of use – speedy operation
- Centering plunger - also turns allowing the user to position the diamond in the frame
- Floating cover (obscuration device) automatically prevents stray light from contaminating the image.

Why we did it and how it helps the user:

The camera works perfectly well in most locations without a controlled lighting environment, however high traffic areas where there is a lot of activity cast shadows that will show up on the live video feed. For consistent images every time, the ASET Cam lighting environment is the way to go. As a bonus, there is a convenient spring loaded plunger which centers the diamond with a gentle press and rotates so you can square the image in the frame.



The Light device sits atop the ASET® Camera and provides uniform illumination. As well as a convenient centering/alignment mechanism it also provides the cover that prevents contamination from entering the girdle area.



To center the diamond, depress the plunger and contact the pavilion. Gently apply slight pressure and release until you feel or see the diamond move to the central location. While applying gentle pressure, you can now rotate the diamond to the desired position for viewing or photographing. Once you are satisfied with the location, remove pressure from the plunger. This will raise the centering bit away from the diamond leaving just the cover.